

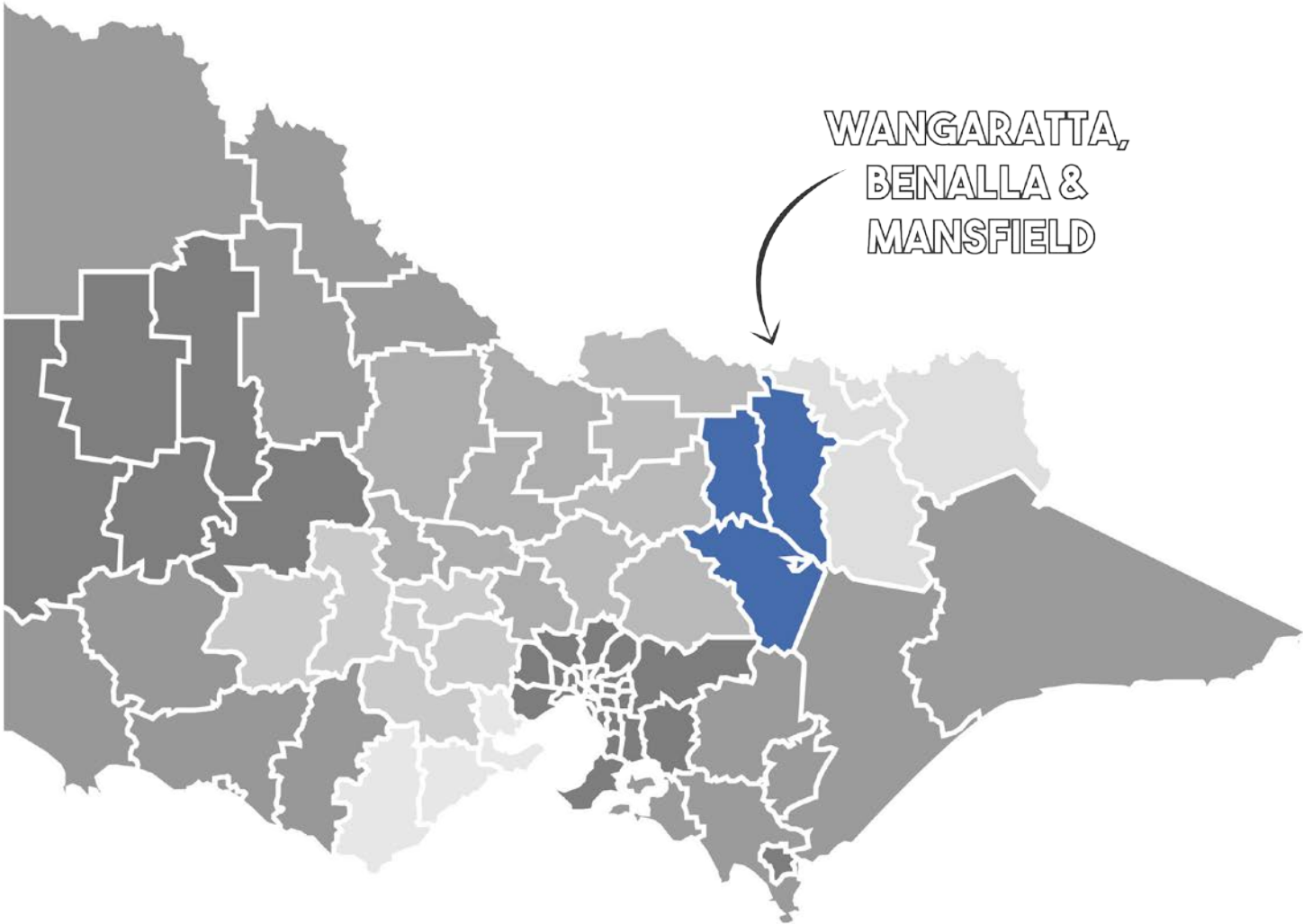


2019 ANNUAL REPORT

NE TRACKS LLEN



LOCAL GOVERNMENT AREAS



CONTENTS

4 WHO ARE WE? STRUCTURED WORKPLACE LEARNING	14-15 FEATURE PROJECT: OVENS- MURRAY WORKFORCE DEVELOPMENT PROJECT MORE PROGRAMS SUPPORTING YOUNG PEOPLE 10 – 19 YEARS
5 GOVERNANCE COMMITTEE OF MANAGEMENT	16 OUT & ABOUT
6 CHAIRPERSON’S REPORT	17 8 DIGITAL LIFE SKILLS ALL CHILDREN NEED AND A TEACHING PLAN
7 EXECUTIVE OFFICER’S REPORT	18-19 ABOUT THE BOARD
8 NETWORK MATRIX 2019	20 PARTNERSHIPS – FINANCIAL SUPPORT FROM NE TRACKS LLEN
9 PROJECT & PROGRAM FUNDING SOURCES	21 AUDITORS REPORT 2019
10-11 PARTNERSHIP REFERENCE GROUPS	22 MEMBER STATEMENT
12 PROGRAMS SUPPORTING YOUNG PEOPLE 10 – 19 YEARS	23 WHAT IS STEM? STUDENT REFLECTIONS
13 FEATURE PROJECT: WANGARATTA DIGITAL HUB ADVISORY COMMITTEES	

WHO ARE WE?

LLEN'S VICTORIA

There are 31 Local Learning & Employment Networks throughout Victoria. The initiative was set up by State Government in 2002 with funding on a contract basis.

LLEN's aim is to create and foster strategic and productive network partnerships to assist young people in need by supporting their education journey; reengaging them in relevant education & training opportunities and accordingly enhance their future chances of meaningful employment.

LLEN organisations identify and bring together community groups that can directly help and support this group.

LLEN's connect the State Government with local communities, local government, schools, training providers, employment groups and employers.

Our focus group is youth aged between 10 and 19, at risk of disengaging from learning.

NE Tracks LLEN, represents the municipalities of Benalla, Mansfield & Wangaratta.

www.education.vic.gov.au/about/programs/Pages/llen.aspx



STRUCTURED WORKPLACE LEARNING

Overwhelming evidence and experience shows young people can enhance both their learning outcomes and their opportunities for achieving employment at the end of their education if they have participated in a quality work experience placement whilst still at school.

The Structured Workplace Learning Program's purpose is to provide schools and students with advice and resources to achieve work experience through the Co-coordinator's efforts in matching young people to the opportunities provided by local employers.

Quality work experience such as School Based Apprenticeships, ensure that the participating student undertakes a vocational education qualification that can count towards a successful VCE/VCAL outcome.

NE Tracks LLEN's Structured Workplace Co-ordinator can be contacted by school staff, parents, students and employers to register an interest in quality work experience.

CO-ORDINATOR: SHANE CRISPIN

GOVERNANCE COMMITTEE OF MANAGEMENT

MEMBERS	ORGANISATION
Adrian Farrer	Cathedral College
Albert Freijah	Dept. of Education & Training
Barbara Alexander	Benalla Rural City
Ben Watts - Chairperson from 16.9.2020	Sarina Russo Apprenticeships
Darren Moffitt	North East Victorian Koorie Organisations
Denis O'Callaghan - Treasurer	Gordon Legal
Felicity Williams	The Centre
Joanne Rock	FCJ College
Joanne Ryan	Merriwa Industries
Louise Pearce - Chairperson to 16.9.2020	Education Consultant
Margaret Attley - Deputy Chairperson to 25.11.2020	Mansfield Shire Council
Sally Matheson	Tomorrow Today Foundation



CHAIRPERSONS REPORT

Welcome to my first chairpersons report which covers the last year of NE Tracks’ Strategic Plan (2016-2019).

One of the strategic directions was to ‘Increase career pathways information, access and awareness’.

Locally we have seen quite an increase within this direction, with lots of local career practitioners undertaking graduate courses and the like which in turn has helped local students.

NE Tracks LLEN had a highly successful year in 2019, with achievements including:

- Successfully managing our contracted responsibilities with the Department of Education and Training
- Financial responsibilities, processes and procedures all met the satisfaction of our new external auditors
- Budget came in on target
- NE Tracks LLEN continued to theme its operational focus in accordance with our 2016-19 strategic plan
- We had strong support from all our major partners, and continued

our operational model based on the needs of the communities of Mansfield, Benalla and Wangaratta

- Our Annual Report will provide readers with further information and evidence of a successful 2019 and
- I am proud of the initiatives and partnerships that our LLEN is continuing to be part of, to assist in connecting to and inspiring young people in our three communities in their education experiences and pathways to a bright future.

I would like to acknowledge and thank my fellow Committee of Management members for their support and commitment to NE Tracks LLEN. While too many to name, every organisation and individual in Mansfield, Wangaratta and Benalla who supported the NE Tracks throughout 2019.

My special thanks and acknowledgment to our outgoing Chair, Louise Pearce for her support and guidance over many years. Louise joined our Board in 2011 and was elected chair in 2014. She steps down due as chair due to work commitments.

Our Deputy Chair Marg Attley has also been of great help and guidance. Marg steps down from the Board as a deputy and member to take on the role as Mansfield Mayor, after first coming to the Board in 2011.

My thanks also to Danny O’Donoghue, our Executive Officer who has provided our organisation with outstanding leadership and collaboration skills, over the network we serve and his team of passionate and enthusiastic staff.

I look forward to working with Committee members, LLEN members and partners into the future as we strive into 2020.



BEN WATTS
Chairperson 2019



Pictured: Danny O'Donoghue and Shane Crispin – Hands On Trades Career Day

EXECUTIVE OFFICER’S REPORT

“The standard you walk past is the standard you accept”*, Lt. General David Morrison, Australian of the Year 2016.

At NE Tracks LLEN we do not accept a standard that:

- Overlooks the fact that some young people are not attending school.
- Allows young people to progress through school education without access to experience in the world of work should they choose.
- Assumes that young people and their parents / carers are fully aware of the skills required in a modern workforce and the multi pathways that make it possible to succeed in further education and or employment.
- Disregards the potential for young people needing support beyond the school gate for matters that may impede achievements of their best educational outcomes such as mental health issues.

So, It is in that context that NE Tracks undertakes its small but important role of helping schools, parents and young people themselves navigate the often challenging passage through school education and onto further study or sustainable and enjoyable careers.

With quite limited resources, the LLEN undertakes none of the projects and programs in which we are involved alone; our mode of operation is through partnerships with schools, businesses, further education providers, local government and community groups that support similar ideals for young

people. Throughout this Annual Report, you will see details of some of these initiatives that we proudly supported in 2019.

I cannot let 2019 disappear without mentioning a couple of important Committee of Management (COM) and staff changes that occurred during 2019.

Interstate work commitments led to Louise Pearce resigning as Chair of the COM and the Committee unanimously voted Ben Watts to take her place.

Whilst Louise remains on the COM, I take this opportunity to thank Louise for the support and guidance she provided me in her role as Chair. Ben Watts is a great supporter of our LLEN and is well credentialed for the Chair’s role.

Marg Attley’s election to Mayor of Mansfield Shire caused her to resign both her roles – member and Deputy Chair of our COM. Marg’s wisdom, advice and staunch supporter of all things “Mansfield” will be missed.

We also sadly say goodbye to another valuable COM member, Adrian Farrer. Adrian joined the COM in 2013 and leaves our locality to take up a prestigious Principal’s appointment in Melbourne.

Our staffing also changed in 2019, commencing with the sad retirement of our long time financial and administration manager, as well as a personal friend, John Blanchard. John served this organisation with distinction for 12 years, commencing in August

2007. Dianne Irvine replaced John in February 2019 and has filled the role admirably, including introducing new and more efficient / transparent financial recording and reporting.

Jackie Cesnik ceased her role as the LLEN Mansfield Program Co-ordinator, while we welcomed Amanda Aldous to our team as the co-ordinator of the Wangaratta Digital Hub.

In closing I acknowledge and thank:

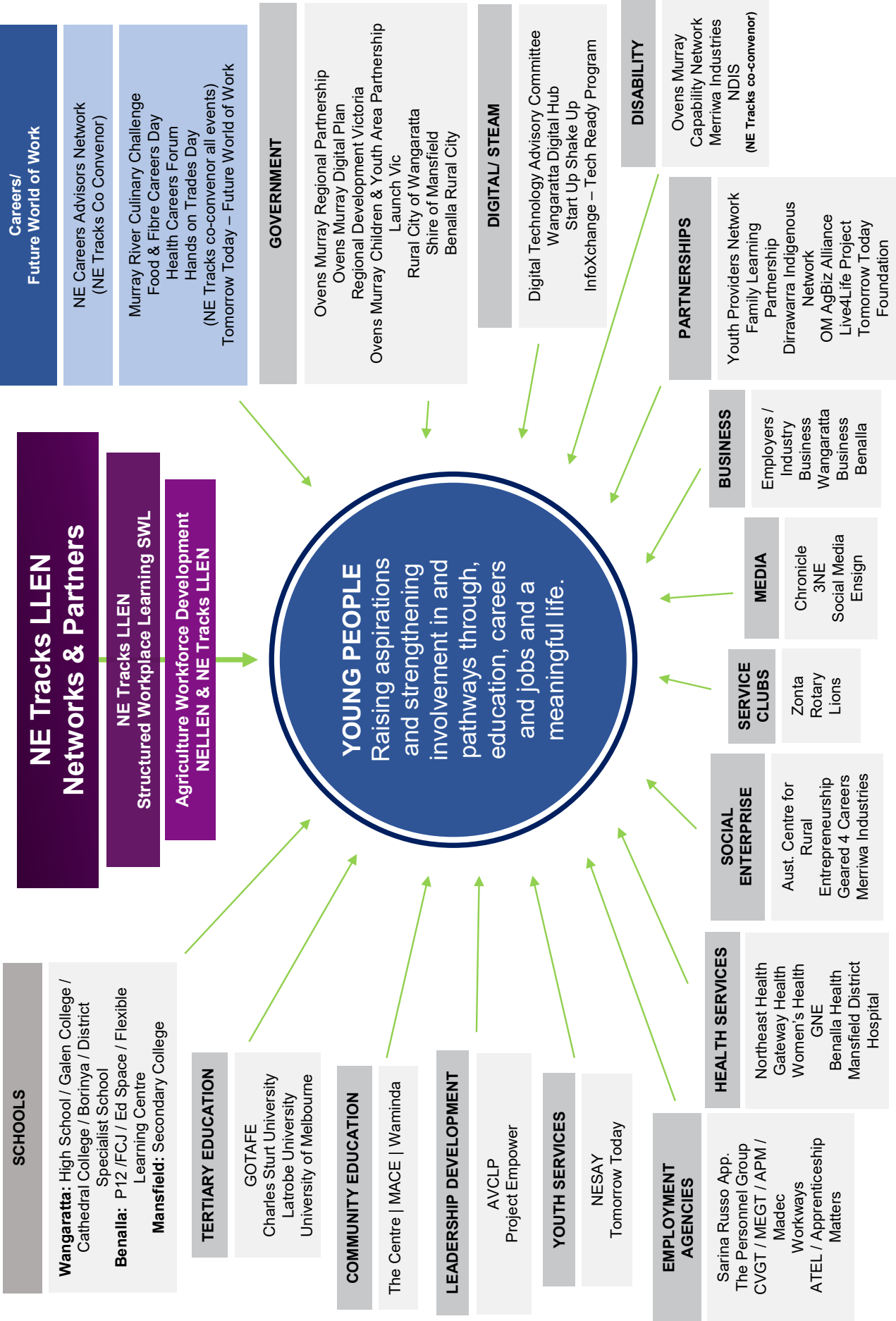
- All 12 Committee of Management members including those in leadership roles for your commitment to the LLEN Governance and ideals.
- Our hardworking, committed and loyal staff, Shane, Anne, Dianne & Amanda who make LLEN a much admired organisation in our three communities.
- All partners and participants involved with the LLEN over the year.



DANNY O'DONOGHUE
Executive Officer

**This quote belongs originally to the Governor of NSW, former Chief, Australian Defence Force David Hurley, but was made famous by Lieutenant General David Morrison, Chief of Army and Australian of the Year 2016, at a speech he gave on 13/6/2013.*

NETWORK MATRIX 2019



2019 PROJECT & PROGRAM FUNDING SOURCES



Pictured: Margaret Attley with guest speakers at AGM

PROGRAM	FUNDING BODY	CONTRACT
DCP/LLEN	State Gov't	31 Dec 2019
SWL	State Gov't	31 Dec 2019
Hands On Trade Careers Expo	SWL Funds	Annual Event
Food & Fibre	DCP Funds	Annual Event
Health Careers	DCP Funds	Annual Event
Wang Digital Hub	Regional Development Victoria	2021
Workforce Development Project	Regional Development Victoria	2023
On Track	Dept of Education	Annual
Infoxchange	Infoxchange	2020
Murry River Culinary Challenge	SWL Funds	Annual Event

HANDS ON TRADES CAREER EXPO



950 STUDENTS ATTENDED

210

BUSINESS, EXPO EXHIBITORS, LOCAL & STATE REPS



100 STUDENTS

20

INTERACTIVE WORKSHOPS

HEALTH CAREERS FORUM

PARTNERSHIP REFERENCE GROUPS

EDUCATION EMPLOYMENT & TRAINING REFERENCE GROUPS

REFERENCE GROUPS

NE Tracks held Reference Group Meetings in each of the three Local Government areas of our coverage. The aim of these meetings is to bring together a wide range of parties all with something to contribute to the Local Learning and Employment Network (LLEN) aim of helping our young people pathway through school to further study or skilled employment.

The goal of Reference Groups is to foster community collaboration in assisting young people to reach their full potential.

Reference Groups:

- Share new and emerging ideas
- Share knowledge / research publications
- Build trust between partners
- Influence the system as a group
- Link partners
- Improve outcomes and aspirations for young people
- Facilitate the coming together of interested parties, sharing a common goal
- Representatives include: Local Government, Employment Providers, organisers, Employers, TAFE Colleges, Secondary Schools, Government Departments, Community organisations.



BENALLA

REFERENCE GROUP

The Benalla Reference Group met 5 times during the year.

CHAired BY: Danny O’Donoghue

GEOGRAPHIC AREAS REPRESENTED:

Benalla, Mansfield, Wangaratta and Wodonga.

EMPLOYERS / PROGRAMS REPRESENTED:

- Benalla Flexible Learning Centre
- Benalla P-12
- Benalla Rural City
- Charles Sturt University
- CVGT
- Dept. of Employment & Educ.
- Dept. of Transport
- ED Space & NEA
- FCJ College
- GOTAFE
- Latrobe Community Health Service & NDIS
- NDCO
- NE Tracks LLEN
- NELLEN
- Rural City of Wangaratta
- Saver Plus / Berry Street
- Sureway
- SWL
- The Centre for Continuing Education
- The Personnel Group
- Tomorrow Today Foundation
- Waminda Community Centre
- Benalla Men’s Shed
- Apprentice Support Program



MANSFIELD

REFERENCE GROUP

The Wangaratta Reference Group met 4 times during the year.

CHAired BY: Danny O’Donoghue

GEOGRAPHIC AREAS REPRESENTED:

Benalla, Mansfield, Wangaratta and Wodonga.

EMPLOYERS / PROGRAMS REPRESENTED:

- DEDJTR
- Dept. of Education & Training
- Mansfield Secondary College
- Mansfield Shire Council
- Mansfield Business Directory
- NE LLEN
- NE Tracks LLEN
- Reconnect/MACE
- Sarina Russo Apprenticeships
- St Mary’s P.S.
- Swinburne/MACE
- Structured Workplace Learning
- The Personnel Group
- Vic Police



WANGARATTA

REFERENCE GROUP

The Wangaratta Reference Group met 4 times during the year.

CHAired BY: Anne Shaw / Danny O’Donoghue

GEOGRAPHIC AREAS REPRESENTED:

Benalla, Bendigo, Mansfield, Wangaratta and Wodonga.

EMPLOYERS / PROGRAMS REPRESENTED:

- ATEL
- Borinya School
- Cathedral College
- Charles Sturt University
- Dept. Premier & Cabinet
- Dept. of Education & Training
- Dept. of Transport
- Galen Catholic College
- Geared for Careers
- GOTAFE
- Hands On Learning
- InfoXchange
- NE LLEN
- NE Tracks LLEN
- NESAY
- Rural City of Wangaratta
- Sarina Russo Apprenticeships
- Super Saver / Berry St.
- Structured Workplace Learning
- The Centre for Continuing Education
- The Personnel Group
- Wangaratta Digital Hub
- Wangaratta & District Special School
- Wangaratta High School

PROGRAMS SUPPORTING YOUNG PEOPLE 10 – 19 YEARS



HANDS ON TRADES Career Expo

Regional Victoria's largest annual hands on careers day. Young people aged 14 to 19 years old currently in school experience hands on activities with various trade and Industry professionals. Various industries and trades show case their industries and professions in an engaging manner. Service providers and training providers get to showcase their services and courses to potential students.

Interactive activities included, but not limited to: Electrical, Spray Painting, Agriculture, Engineering, Transport, Panel Beating, Child Care, Physiotherapy, Water, Royal Flying Doctors, Australian Defence Force, Victoria Police, Quarry Operations, Plumbing, Hospitality and Welding.

PARTNERS: NE Tracks LLEN, Tomorrow Today Foundation, GMLLEN, NELLEN, Rural City of Wangaratta, Benalla Rural City, GOTAFE, AgSkills Vic, Sarina Russo Apprenticeships, The Personnel Group, Winton Motor Raceway, Wodonga TAFE, Wangaratta District Specialist School.



Food & Fibre Careers Day

Victoria's largest agricultural careers day is held annually at Melbourne University's Dookie Campus for Year 9-12 students interested in careers in food, fibre, agriculture and horticulture. 300 students from across the Goulburn Valley and North East Victoria attended in May 2019. Students choose 3 workshops from a range of 22 interactive workshops and school teams also participate in the Young Farmers Challenge.

PARTNERS: NE Tracks LLEN, GMLLEN, CCLLEN, Rural City of Wangaratta, Benalla Rural City, City of Greater Shepparton, GOTAFE, AgSkills Vic, Charles Sturt University, University of Melbourne.



Murray River Culinary Challenge

The MRCC is an annual competition for VET Hospitality students. Wangaratta hosted the event in 2019. The Grand Final was held at Galen Catholic College.

PARTNERS: Goulburn Murray LLEN, Campaspe Cohuna LLEN, NE Tracks LLEN & Murray Mallee LLEN, Precinct Bar & Restaurant, Intermezzo Café, Café Pre Vue and Aroma Deli Café



BiG Day In

As part of the Digital Innovation Festival the BiG Day In was held for the first time in Wangaratta in September 2019. This event is designed for students in Years 9-12 interested in careers in information technology. Students hear from a range of industry professionals about their experiences and journeys in areas such as cyber security, games development, coding, drones and software development.

PARTNERS: Australian Computer Society, Victorian Government Digital Innovation Festival, Charles Sturt University, NE Tracks LLEN.



Infoboxchange

Infoboxchange, in conjunction with GOTAFE and NE Tracks LLEN, is offering Certificate III in Information, Digital Media and Technology in 2020 for school leavers.

The course is free and includes industry tours, guest speakers and support to transition into employment and traineeships.

FEATURE PROJECT



WANGARATTA DIGITAL HUB

The Wangaratta Digital Hub offers accessible, affordable digital technology services and opportunities, providing a program of activities for students, business, communities and the digital workforce. Located in the Wangaratta Library building, it is a central point of support for engagement in digital activities and start-ups by establishing and promoting networks and events that foster an innovation culture.

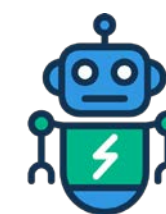
The Wangaratta Digital Hub is a 3 year project funded by Regional Development Victoria to activate a space for digital inclusion, engagement and collaboration.

THE STEERING GROUP MEMBERS ARE:

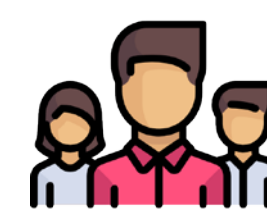
Regional Development Victoria, NE Tracks LLEN, Rural City of Wangaratta, Charles Sturt University, GOTAFE, Start Up Shake Up and Wangaratta Library.



CODING CLUB
INITIATED BY PARENTS



ROBOT KIDS
250
CHILDREN & PARENTS
ATTENDED



1500
COMMUNITY AND
BUSINESS VISITORS

Wangaratta Digital Hub representatives participated in the development of the Ovens Murray Digital Plan.



/Wangaratta Digital Hub

ADVISORY COMMITTEES

Digital Technology Advisory Committee (DTAC)

DTAC opportunities for students include: coding workshops, National & International VEX Robotic Championships, Girls in STEM network, Digital Innovation Festival events, National Youth Science Forum, DigiCon, In2Science Program, STARRS Planetarium, Questacon Camp, OM Regional Partnerships case study, Start Up Shake Up – Jump Start Me and Smart Seeds workshops, technology traineeships and community events.

Partners: Galen Catholic College, CSU, GOTAFE, NE Tracks LLEN, Education Advantage.

NE Careers Advisors Network

NE Tracks LLEN, in collaboration with Charles Sturt University, facilitates a regional network for career practitioners to support teachers and career advisors from secondary schools in Wangaratta, Benalla, Bright, Myrtleford, Mt. Beauty, Beechworth, Rutherglen and Mansfield. Members of the network also include tertiary education providers and job service providers.

The network meets 8 times a year and shares information and resources promoting career and pathway options for students. Network activities also include promotion of professional development for career practitioners, lobbying and advocacy to State Government and input to government inquiries.

FEATURE PROJECT



OVENS-MURRAY WORKFORCE DEVELOPMENT PROJECT

In partnership with North East LLEN (NELLEN), North East Tracks LLEN (NETRACKS LLEN), has received funding from Regional Development Victoria (RDV) to pilot a project that introduces vocational education to year 9 students (standard education practice is to delay vocational education studies to year 10), in North East Victorian Schools.

This project has expanded the focus to include the horticulture and health sectors.

The aim is to prove and verify the benefits that accrue to a young person's education and future aspirations by becoming engaged in hands on learning at year 9.

The project workforce team works in a co-ordination role to connect schools/ students to businesses that see benefits in contributing to the learning of their potentially future workforce, and an RTO to deliver the vocational learning.

The Workforce Development Project (WDP) is based upon and expands on a Year 9 Agriculture/Horticulture pilot program developed and delivered at Mansfield Secondary College. Commencing in 2009, it is now an integrated part of the school's curriculum. The program addressed the need for a sustainable agriculture

workforce by recruiting Year 9 students into agricultural careers through early contact with employers, such as farmers, then offering an enrolment into relevant Vocational Education and Training (VET) certificates presented by a local TAFE provider.

From July 2018 to June 2022, WDP will introduce this program, colloquially referred to as 'the Mansfield Model', into 24 education sites in the Ovens Murray region, concurrently extending the student's industry experiences into the Health Care / Social Assistance sector. To deliver the project, NELLEN and NE Tracks Local Learning and Employment Network recruited an experienced and insightful team including the creator of the Mansfield Model, Julie Aldous. Under the guidance of Project Manager Norm Madden, the team in 2019 also included Lucie Wallis and Sue Brunskill—the Industry-Education Liaison Officers.

Following completion of Stage One (Introduction Phase) at the end of 2018, the project entered the first year of the Implementation Phase (Stage Two), which is marked by the liaison and coordination activities that engage education sites, business partners and Year 9 students. In Semester 2 of 2019, the first 20 students commenced in the project's program. These Year

9 and 10 students from Tallangatta Secondary College studied Certificate II in Agriculture with Wodonga TAFE visiting the school to deliver training. In addition, groups of students from Years 8 to 10 participated in industry workshops held on local farms from late 2018 and throughout 2019 including students from Corryong College, Mt Beauty Secondary College and Wodonga Middle Years College (WMYC). Towards the end of 2019, a group of Year 9 WMYC students participated in a Health workshop at Gateway Health Wodonga.

The WDP team thanks business owners and staff from industry, health services and education sites who have given their time and expertise to help make this project a success. The project's success is also heavily intertwined with government policy for schools and the VET sector, ideally with both education streams working more closely together. The project has two industry advisory groups, one for each sector, and a State Government interdepartmental group. These three key advisory bodies meet quarterly, and the project will deliver annual dashboard evaluation reports for distribution.

To improve the visibility of the WDP, marketing materials and a promotional video were developed in 2019 with the project being rebranded as 'What's it REALLY like... Matching learning with jobs: Certificate II @ Year 9'. The promotional video, titled 'Year 9 Certificate II in Agriculture: Mansfield Secondary College', showcases the prototype upon which the project is based and highlights the engagement of students and farmers.



/WorkforceDevProject



MORE PROGRAMS SUPPORTING YOUNG PEOPLE 10 – 19 YEARS



Health Careers Forum

The forum aims to bring 'a hands on' approach informing Year 9 and 10 students about the many diverse career opportunities available in the health and allied health sectors. Workshops include general practice medicine, pathology, nursing, midwifery, physiotherapy, aged care, allied health, simulation, drug and alcohol counselling, and social work.

PARTNERS: NE Tracks LLEN, Charles Sturt University, Northeast Health Wangaratta, Department of Health & Human Services and Gateway Health.



Start Up Shake Up

Funded by Launch Vic, this project builds, nurtures and supports the innovation ecosystem in North East Victoria, realising innovative solutions to local challenges.

PARTNERS: Launch Vic, Benalla Rural City Council, Rural City of Wangaratta, Mansfield Shire Council, Indigo Shire Council, Charles Sturt University, NE Tracks LLEN, Goulburn Ovens TAFE.

ON TRACK CONNECT



On Track Connect

Funded by DET, LLEN's across Victoria offer recent school leavers an opportunity for advice on pathway options for those students unsure of their future. It also provides the Department of Education with destination information on a sample of students.

OUT & ABOUT



Examples of interactive career experiences.



FCJ VCAL PLACEMENT STUDENT CONTROLLING THE KIDS



STYLING A NEW CAREER DIRECTION



PPG & GOTAFE MOBILE PAINTING BOOTH



VISITORS TO HANDS ON TRADE CAREERS DAY



FOOD & FIBRE



AG SCHOOLS FARMERS CHALLENGE



VIC POLICE & TEAM ARMY



PROJECT DIGGER TEAM ARMY

8 DIGITAL LIFE SKILLS ALL CHILDREN NEED & A PLAN FOR TEACHING THEM



ABOUT THE BOARD



Adrian Farrer
Cathedral
College

Adrian is leaving NE Tracks Board after being appointed as Principal of Trinity College, Camberwell. Adrian was a great contributor to our organisation and will be missed. We wish Adrian the best in his new and exciting role.



Albert Freijah
Department of
Education

Due to an impossibly busy work schedule. Alby has indicated he will be initiating a membership change from himself representing the Education Department to a colleague.



Barbara Alexander
Benalla
Rural Council

Barbara is a long term serving Councillor at the Rural City of Benalla and joined our Board in 2012.



Ben Watts
Sarina Russo
Apprenticeships

A relatively young man and quite a recent Board member, Ben was elected to the role of Board Chair in September 2019.

Ben brings a wealth of experience and understanding of young people and knowledge of the enabling service providers that assist young people progress from school to employment.



Joanne Ryan
Merriwa
Industries

Jo is the Chief Financial Officer for Merriwa Industries and joined the Board in 2013. Jo is also a member of the Admin Working Party.



Louise Pearce
Education
Consultant

Louise has held the position of Chairperson of the Board since 2014 and has demonstrated outstanding leadership and support for fellow Board members and staff. Louise advised fellow Board members at May's Annual General Meeting that she would step down as Chair due to personal and business commitments. Louise will stay on as a Board member.



Darren Moffitt
North East Victorian
Koorie Organisations

Darren is employed by The Dept. of Premier & Cabinet employees as the Aboriginal Community Development Broker | Community Engagement Officer. Darren holds a leadership role in the Wodonga and Mansfield Local Aboriginal Network and first joined the Board in 2012.



Denis O'Callaghan
Gordon Legal

Is the Principal Lawyer with Gordon Legal in Melbourne. Denis is a founding member of the Board (2002) the long standing Treasurer and member of the Admin Working Party. Denis joins our meetings by phone hook-up when he can't attend in person.



Felicity Williams
The Centre for
Continuing Education

Felicity is the CEO of The Centre for Continuing Education. Felicity joined the Board in 2014.



Joanne Rock
FCJ College
Benalla

Joanne is the Principal of FCJ College in Benalla and first joined the Board in 2015.



Margaret Attley OAM
Mansfield
Shire Council

After 8 years as a Board member and the past 4 years as Deputy Chair, Marg announced she would be stepping down, in order to devote more time to her new role as the Mayor of Mansfield. Once again we have been very fortunate to have had Marg's experience and network connections, especially representing the interests of young people in the Mansfield district.



Sally Matheson
Tomorrow Today
Foundation

Sally Matheson joined the Board in 2018 and is the Education Benalla Manager for The Tomorrow Today Foundation.

BIG DAY IN

FIRST TIME IN WANGARATTA



100

STUDENTS ATTENDED



NE CAREERS NETWORK

14 PARTNERS

REGIONAL SCHOOLS & FLEXIBLE
LEARNING CENTRES IN NE VIC



FOOD FIBRE CAREERS DAY

300 / 22

STUDENT
ATTENDANCE

INTERACTIVE
WORKSHOPS

PARTNERSHIPS WHICH RECEIVED FINANCIAL SUPPORT FROM NE TRACKS



EVENTS

Big Day In
Food & Fibre Careers Day
Hands On Careers Expo
Health Careers Day
Murray River Culinary Challenge



SCHOOLS

Benalla P12
Benalla Flexible Learning Centre
Borinya
Cathedral College
Galen College
Mansfield Secondary School
Wangaratta High School



ORGANISATIONS

Gadhaba LIN
HOCUS
Live4Life Mental Health Program
The Centre
Waminda Community Centre
Wangaratta Business Awards
– Sponsorship of Category
Zonta

AUDITORS REPORT FOR 2019

The following Financial Reports – Statement of Financial Position & Statement of Financial Performance have been prepared by our Auditors: Goulburn Valley Audit Services / Wallace Stubbs, 160 Welsford Street Shepparton.

FINANCIAL REPORT FOR 2019

STATEMENT OF FINANCIAL POSITION

As at 31st December 2019

Current Assets	2019	2018
Cash & Cash equivalents	397,594	177,057
Receivables	44,676	102,966
Other Assets	36	-
Total Current Assets	442,306	280,023
Non Current Assets		
Property, Plant & Equipment	16,775	23,903
Total Assets	459,081	303,926
Current Liabilities		
Trade & Other Payables	54,461	28,361
Grants in Advance	344,205	211,688
Provision for Employee Entitlements	8,680	13,123
Total Current Liabilities	407,346	253,172
Non Current Liabilities		
Provision for Employee Entitlements	11,219	11,089
Total Non Current Liabilities	11,219	11,089
Total Liabilities	418,565	264,261
Net ASSETS	40,516	39,665
Equity		
Retained Earnings	40,516	39,665
Total Equity	40,516	39,665

STATEMENT OF FINANCIAL PERFORMANCE

As at 31st December 2019

Income	2019	2018
Dept. of Educ. & Training	397,654	384,762
Interest Income	490	641
Other Income	147,908	45,764
Total Income	546,052	431,167
Less Operating Expenses		
Audit & Accounting Fees	2,500	3,439
Promotion Expenses	20,027	11,177
Communication Expenses	7,444	6,030
Fees & Charges	5,228	1,835
Insurance	957	1,531
Depreciation	7,128	8,008
Consumables	33,092	8,193
Travel & Motor Vehicle Expenses	25,683	25,935
Project Expenses	51,477	61,463
Rent	23,363	16,133
Salaries & Wages	321,264	264,152
Superannuation	30,748	25,104
Other Employment related expenses	1,660	8,228
Staff Development	-	4,041
Sundry Expenses	3,704	8,585
Administration expenses	5,000	-
Maintenance	2,366	-
Catering	3,559	-
Total Expenses	545,200	453,854
Net Profit/Loss(-)	852	- 22,687

MEMBER STATEMENT

NE TRACKS LOCAL LEARNING AND EMPLOYMENT NETWORK INCORPORATED
ABN: 18 598 926 337

COMMITTEE REPORT

Your committee members present this report on the association for the financial year ended 31st December 2019.
The names of each person who has been a committee member during the year are:

Benjamin Watts	Chairperson/Administration Working Party Member
Denis O’Callaghan	Treasurer/Administration Working Party Member
Joanne Ryan	Administration Working Party Member
Barbara Alexandra	
Louise Pearce	
Albert Freijah	
Sally Matheson	
Darren Moffitt	
Joanne Rock	
Felicity Williams	
Adrian Farrer	Resigned 25th November 2019
Margaret Attley	Resigned 25th November 2019

Principal Activities

The principal activities of the association during the financial year were to develop and maintain community partnerships for the purpose of supporting young people with learning and employment opportunities.

Significant Changes

No significant change in the nature of these activities during the year.
Operating Result
The surplus/ (deficit) for 2019 amounted to \$852 / 2018: (\$22,687).

Benjamin Watts – Chairperson

Denis O’Callaghan – Treasurer

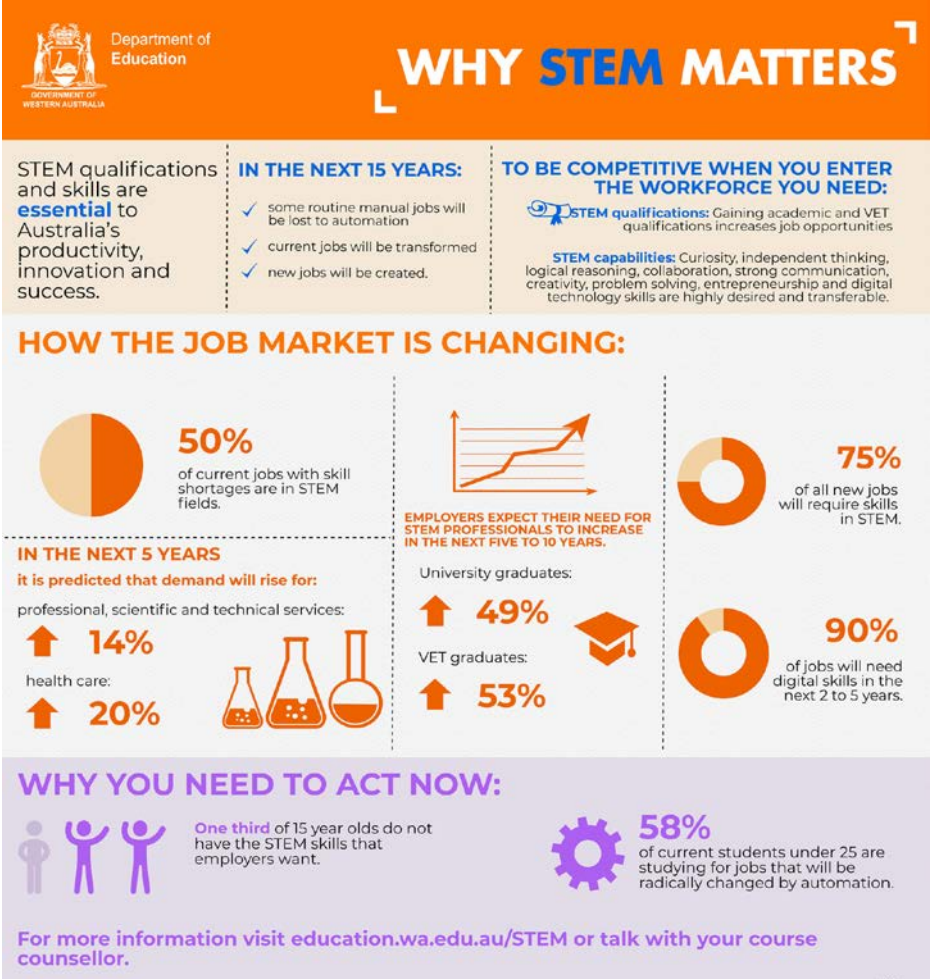
Dated: 24/2/2020

WHAT IS STEM?

STEM is an approach to learning and development that integrates the areas of science, technology, engineering and mathematics.

Through STEM, students develop key skills including:

- Problem Solving
- Creativity
- Critical Analysis
- Teamwork
- Independent Thinking
- Initiative
- Communication
- Digital Literacy



SOURCE: Department of Education WA

STUDENTS REFLECTIONS

Dear Girls,

Do what you love. If others don't accept who you are, why is that an issue you need to worry about? You have the power and the right to do anything, so why not do everything?

This is what the Girl Powered STEM evening taught me. This is what I believe every girl should be taught. You have the right to be you. That evening I took so much away from listening to some incredible women tell their stories. There was such an immense sense of community and potential. I personally got to meet some new people that I was amazed had so much in common with me. Sometimes in our society it's easy to feel off or weird if you're not the image of the teenager you see on a magazine or you have interests or skills no one else can relate to. It's easy to fall into the trap of following who people want to be, instead of being who YOU want to be.

That evening I realized, you know what, as long as I love what I do, why does anyone else need to love it? There are so many opportunities that people would love in STEM and other areas, but only a few people are willing to try, are willing to be brave.

The other thing I learnt that night was never let an opportunity pass by unless you have just tried a small bit of it. I encourage all girls to look out for more of these events, to try new things, to push themselves, but most of all, to believe in themselves. Thank you so much to everyone who helped put this fantastic event together, I am very grateful.

Grace Jenkins
Year 7 | Galen College

'Reproduced from Galen Catholic College Newsletter, Issue 19, October 2019'

(These reflections could equally apply to all students).



CONTACT DETAILS

NE Tracks LLEN
P.O. Box 423 BENALLA
85 Nunn Street BENALLA 3672

Office: admin@netracksllen.org.au
Executive Officer: eo@netracksllen.org.au

WWW.NETRACKSLLEN.ORG.AU

Acknowledgements

World Economic Forum: weforum.org
Vic State Government – *What is STEM*